

CDL.04.6... STACKABLE CIRCUIT SELECTOR VALVES


CDL.04.6...

"A09" DC COILS CH. I PAGE 67

CONNECTORS STANDARD CH. I PAGE 19

The stackable circuit selector valves, type CDL.04.6, allows one single drive of 5 users with 4 elements connected in series.

As they are moved from high performances solenoids they don't need the external drainage.

Additionally, beyond having a reduced and compact dimensions, they can manage high hydraulic powers with a minimal pressure drop.

Max. pressure	250 bar
Max. flow	20 l/min
Overlap	positive
Hydraulic fluids	Mineral oils DIN 51524
Fluid viscosity	10 ÷ 500 mm ² /s
Fluid temperature	-25°C ÷ 75°C
Ambient temperature	-25°C ÷ 60°C
Max. contamination level	class 10 in accordance NAS with 1638 with filter $\beta_{25} \geq 75$
Weight	see "Overall dimension"

ORDERING CODE

CDL Stackable circuit selector valve

04 Size NG04

6 No. of way
(single element)

W Threaded connectors
1/4" BSP

I Internal drainage

***** No. of elements: 1 / 2 / 3 / 4

***** Voltage (Tab. 1)

****** Variants (Tab. 2)

1 Serial No.

TAB.1 - A09 (27 W) COIL

DC VOLTAGE	
L	12V
M	24V
N	48V*
P	110V*
Z	102V*
X	205V*
W	Without DC coil

115Vac/50Hz
120Vac/60Hz
with rectifier

230Vac/50Hz
240Vac/60Hz
with rectifier

Voltage codes are not stamped on the plate, their are readable on the coils.

* Special voltage

• The AMP Junior coil and with the flying leads (with or without diode) coils are available in 12V or 24V DC voltage only.

• The Deutsch coil with bidirectional diode is available in 12V DC voltage only.

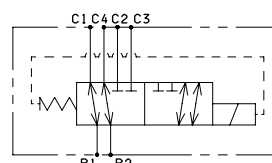
TAB. 2 - VARIANTI

VARIANTE	CODE
No variant	00
Viton	V1
Pilot light	X1
Rectifier	R1
Solenoid valve without connectors	S1
Cable gland "PG 11"	C1
Viton + Pilot light	VX
Viton + Rectifier	VR
Pilot light + Rectifier	XR
Rotary emergency button	P1(*)
Emergency button	E1
AMP Junior connection	AJ
Bobina con fili (250 mm)	FL
with flying leads (130 mm) and integr. diode	LD
Deutsch connection with bidir. diode	CX

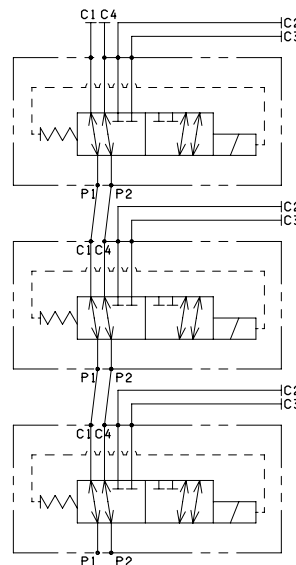
Other variants relate to a special design.

HYDRAULIC SYMBOLS

SINGLE ELEMENT

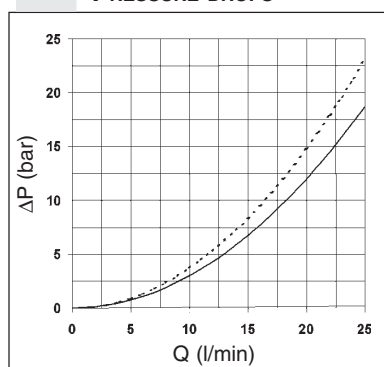


MULTI STATION CONNECTION



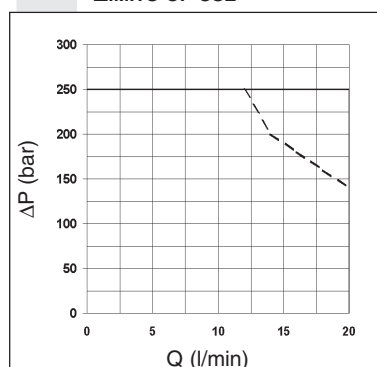
(*) **P1 Emergency** tightening torque
max. 6±9 Nm / 0.6 ÷ 0.9 Kgm with CH n. 22

PRESSURE DROPS



— P1 → C1
P1 → C2
- - - P2 → C3
P2 → C4

LIMITS OF USE



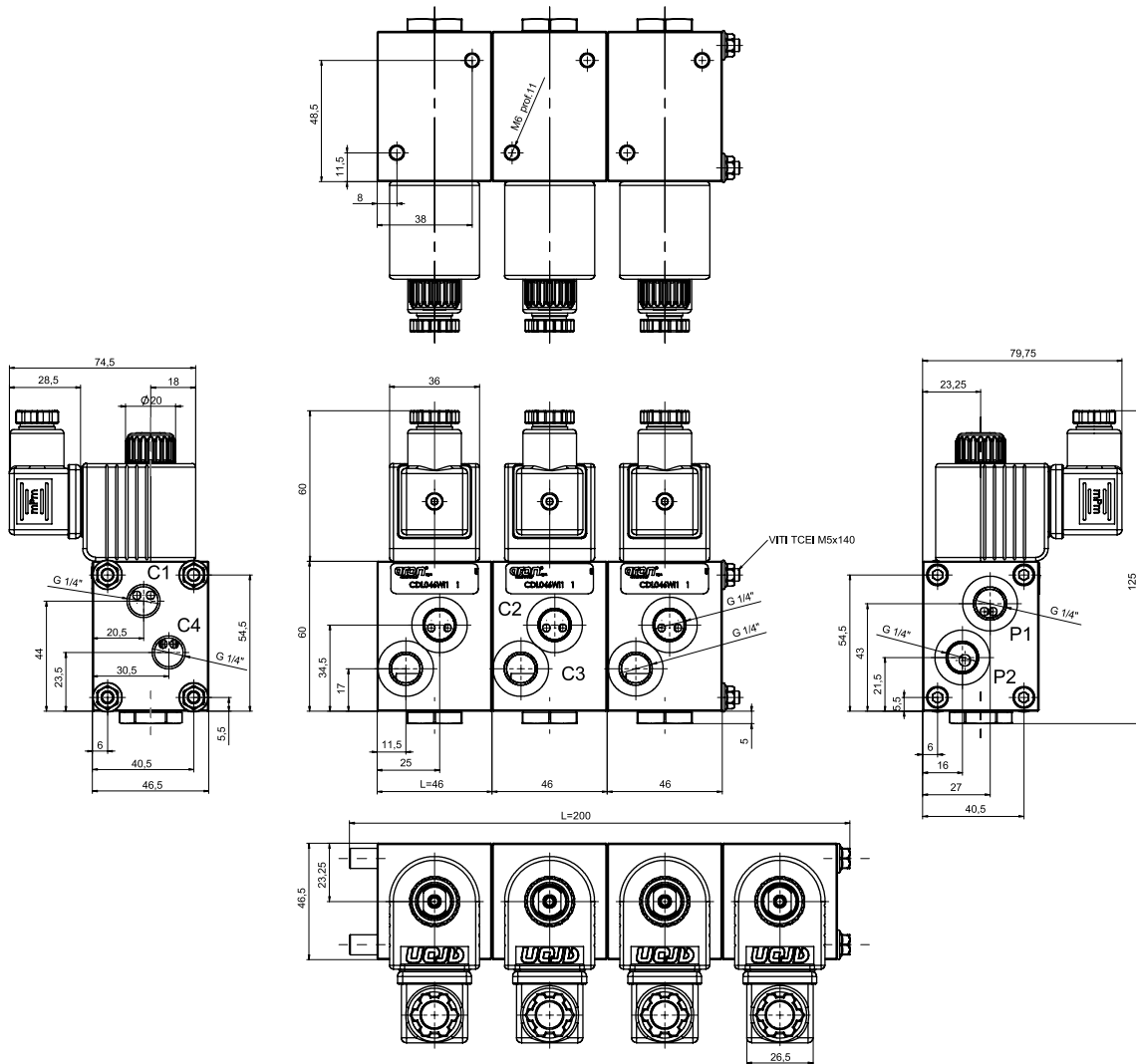
— Energizing
- - - De-energizing

Leakages: ≤10 cc/min with rest carried out at a fluid temperature of 40°C with a pressure at 200 bar; the fluid used was a mineral based oil with viscosity of 46 mm²/s at 40° C.

The tests have been carried out with solenoids at operating temperature and a voltage 10% less than rated voltage with a fluid temperature of 50°C. The fluid used was a mineral oil with a viscosity of 46 mm²/s at 40 degrees C.

OVERALL DIMENSIONS

1



Fixing screws with material specifications min. 8.8
Tighten the screws to a torque of 5 Nm (0.5 Kgm)

No. of elements	No. of way	L (Length)	Weight (Kg)	Fixing screws	Kit spare part code* (rods and studs)
1	06	46	1,05	-	/
2	08	100	2,20	TCEI M5x95	V89.54.0020
3	10	145	3,30	TCEI M5x140	V89.54.0021
4	12	200	4,45	TCEI M5x194 (special rods)	V89.54.0022

(*) For multiple composition rods and studs are available.

Support plane specifications

